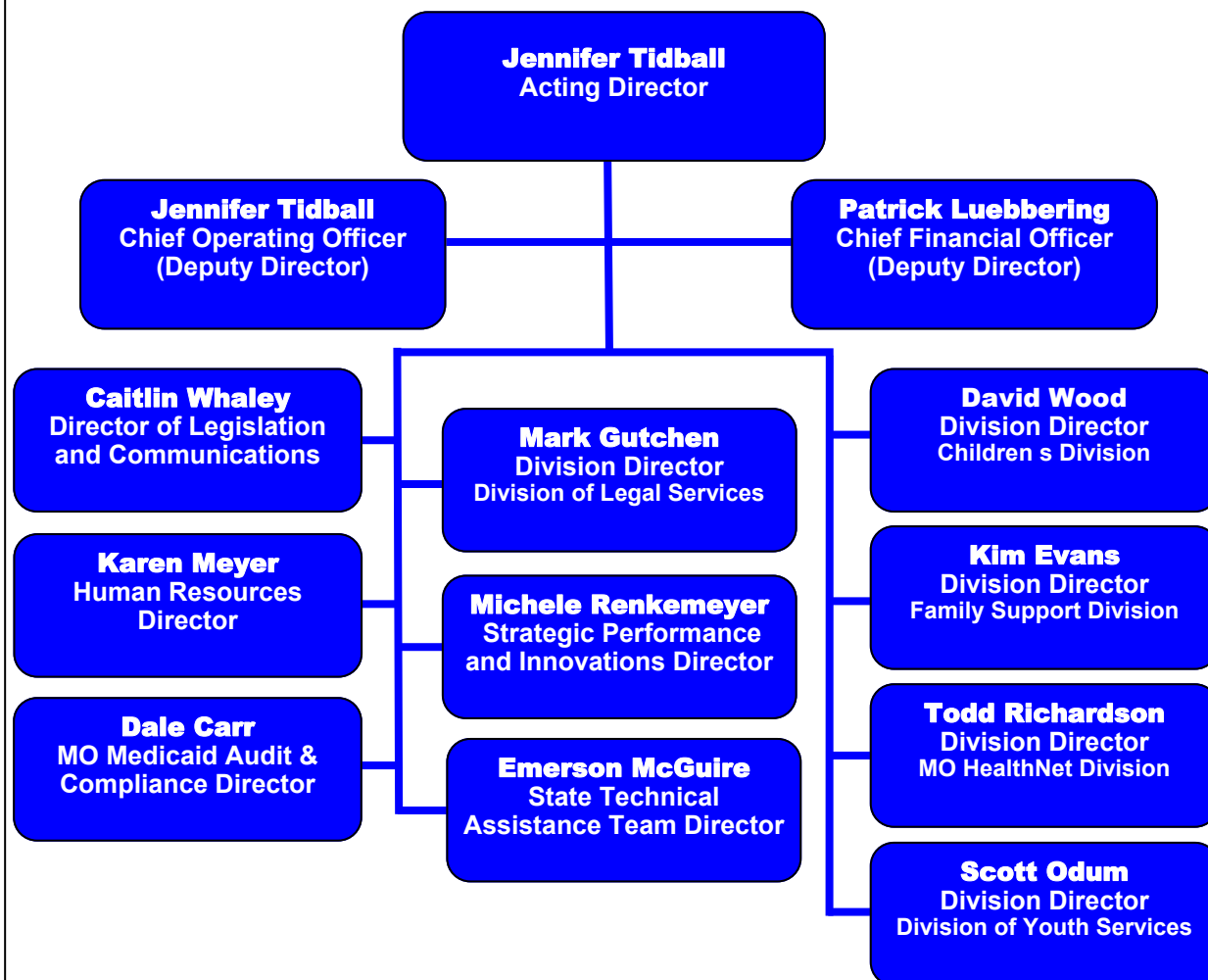


Department of Social Services

221 W. High Street, Room 240
PO Box 1527
Jefferson City, MO 65102 1527
Phone: 573 751 4815
Fax: 573 751 3203

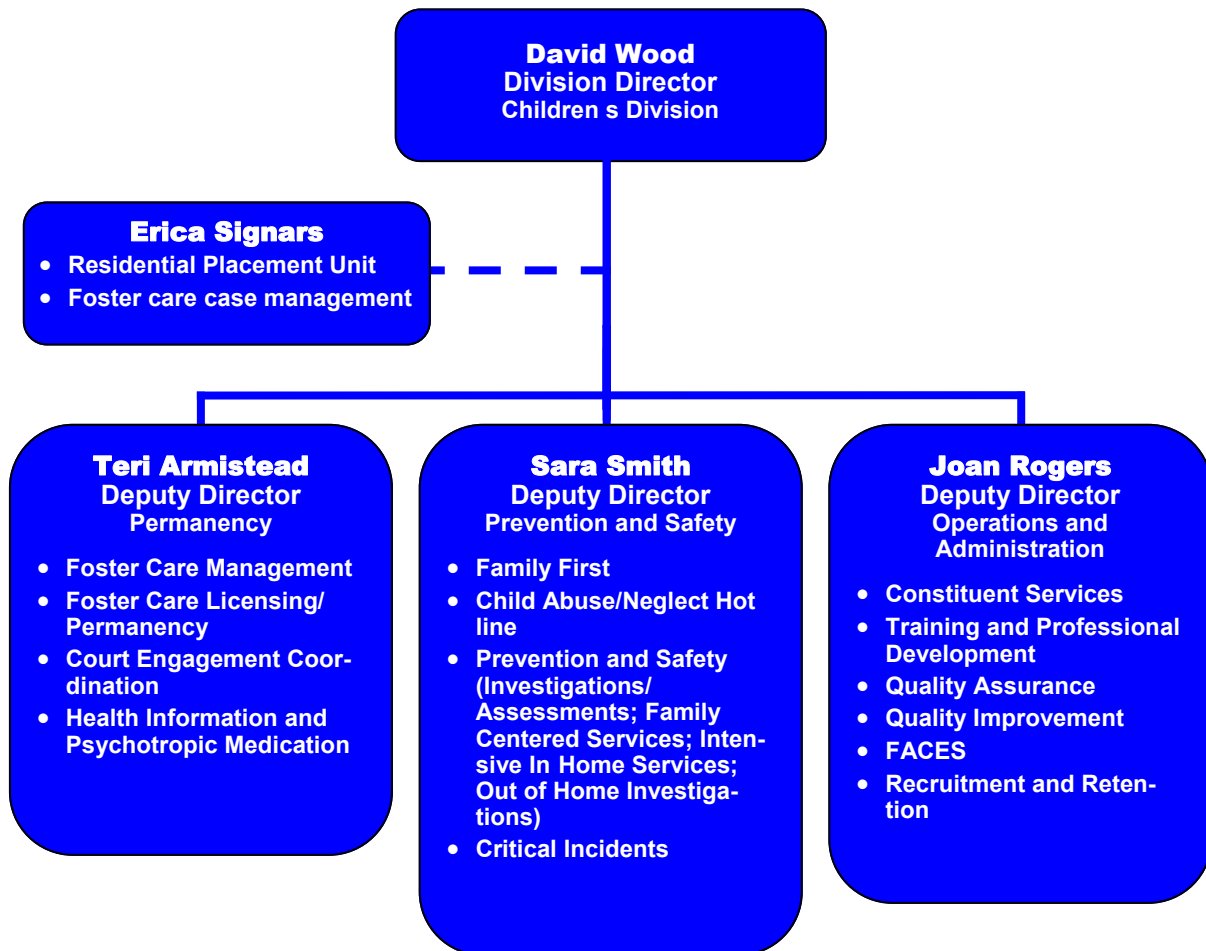


- In Missouri, the Department of Social Services (DSS) is responsible for child welfare, child support enforcement, needs based programs, juvenile justice, and MO HealthNet administration.
- DSS has four program divisions (Children's Division, Family Support Division, MO HealthNet Division, and Division of Youth Services) and two support divisions (Division of Finance and Administrative Services and Division of Legal Services) reporting to the Office of the Director. The Office of the Director oversees and coordinates the divisions' programs and services.
- The department's SFY 2019 budget is \$9.7 billion, of which \$1.8 billion is General Revenue.
- 98.8¢ out of every DSS General Revenue dollar goes directly into programs.
- DSS has local offices for the Children's Division, Family Support Division, and Division of Youth Services. For an interactive list of contacts in our local offices, please visit our web site, http://www.dss.mo.gov/dss_map/.

Department of Social Services

Children's Division

205 Jefferson Street
PO Box 88
Jefferson City, MO 65103 0088
Phone: 573 522 8024
Fax: 573 526 3971

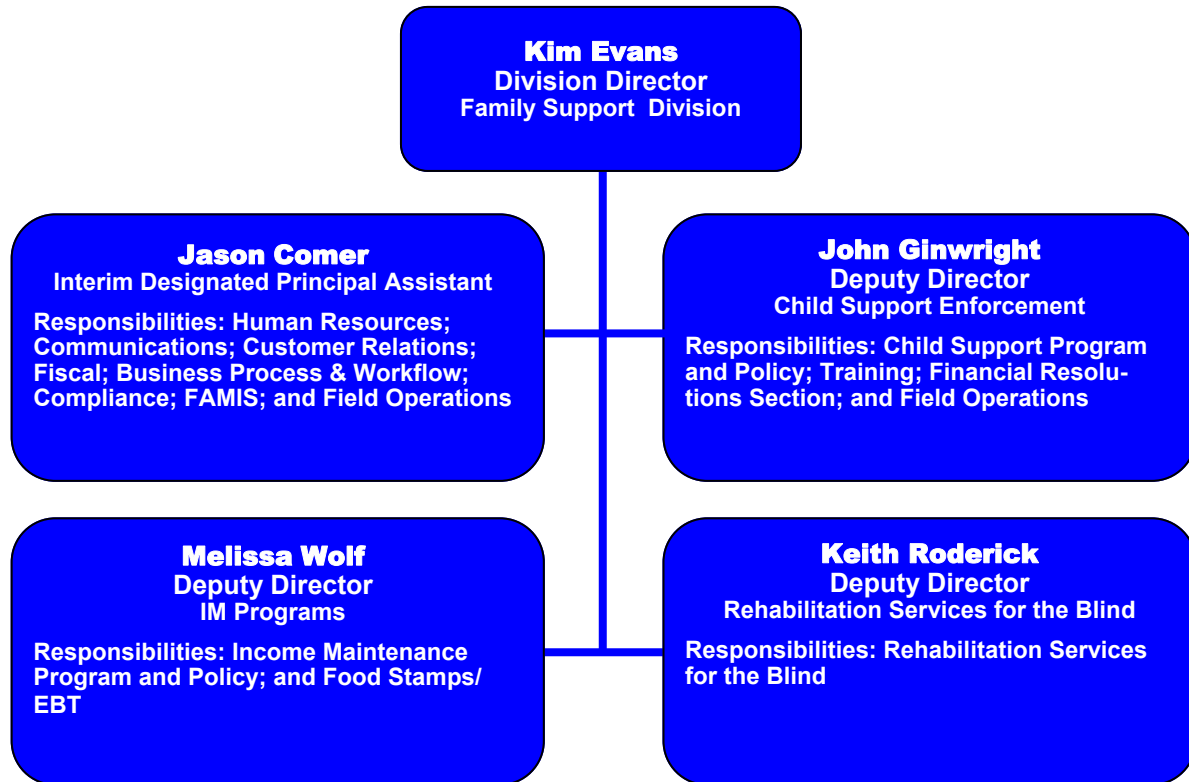


- The Children's Division (CD) is charged with administering a variety of child protection and permanency programs and services including:
 - Adoption/Guardianship Subsidy;
 - Child Assessment Centers;
 - Child Care;
 - Children's Treatment Services;
 - Family Assessments in response to reports of possible child abuse and neglect;
 - Foster Care;
 - Independent Living;
 - Intensive In-Home Services;
 - Residential Treatment Services; and
 - Transitional Living.
- For a list of contacts in our local offices, please visit our web site, <http://www.dss.mo.gov/cd/office/>, and choose your county from the list.

Department of Social Services

Family Support Division

615 Howerton Court
PO Box 2320
Jefferson City, MO 65102 2320
Phone: 573 751 3221
Fax: 573 751 0507

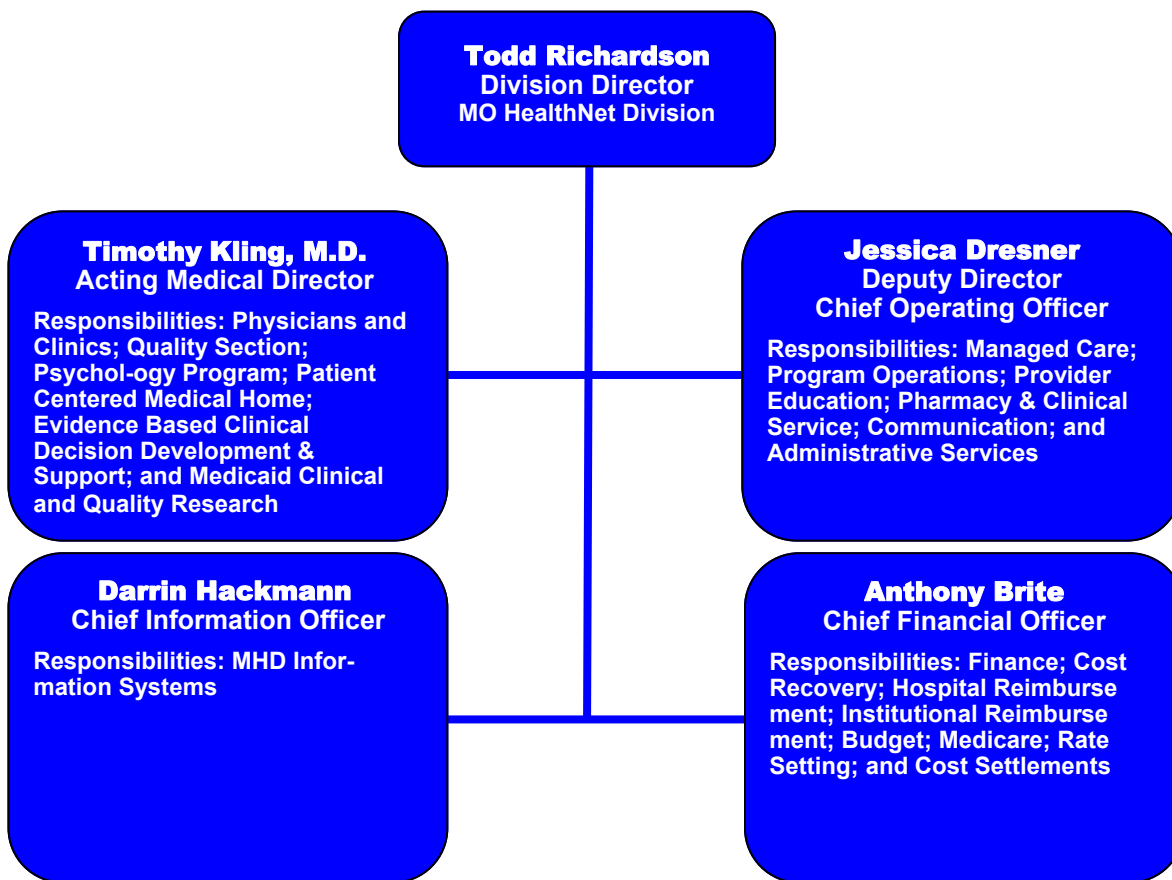


- The Family Support Division (FSD) is responsible for the direction and management of the state's child support enforcement, rehabilitation services for the blind, needs based programs, and Quality Review and Training.
- For an interactive list of contacts in our local offices, please visit our web site, http://www.dss.mo.gov/dss_map/.

Department of Social Services

MO HealthNet Division

615 Howerton Court
PO Box 6500
Jefferson City, MO 65102 6500
Phone: 573 751 3425
Fax: 573 751 6564

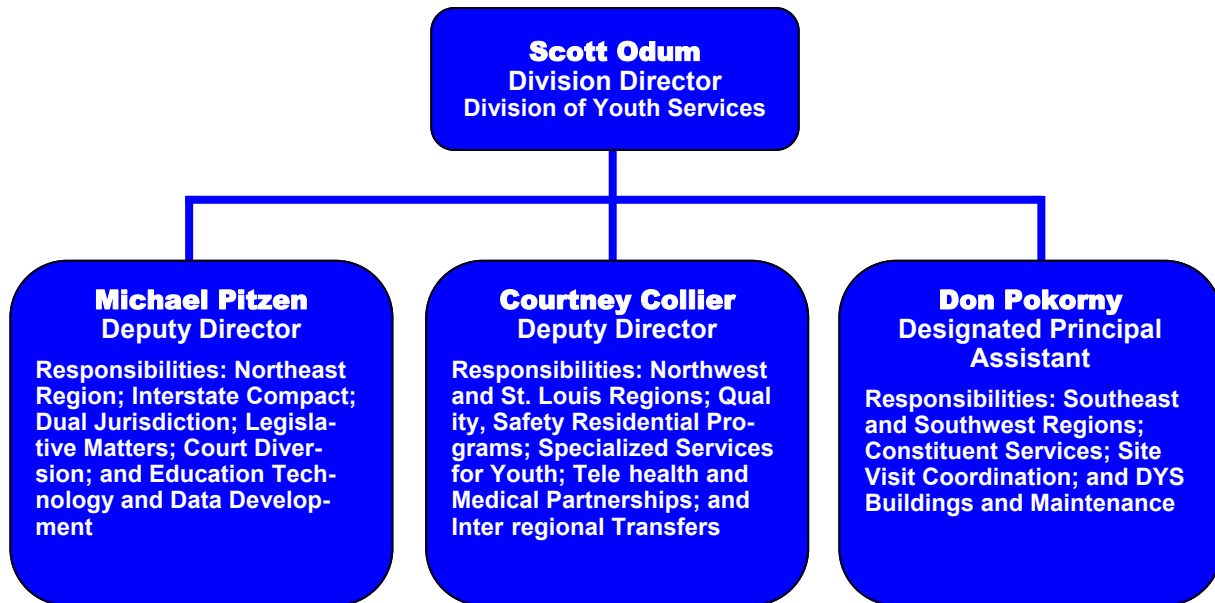


- The MO HealthNet Division (MHD) is responsible for the direction and management of the State's MO HealthNet (Medicaid) Fee-For-Service, Managed Care, and MO HealthNet for Kids programs.
- Note: MHD does not operate local offices.

Department of Social Services

Division of Youth Services

3418 Knipp, Suite A 1
PO Box 447
Jefferson City, MO 65102 0447
Phone: 573 751 3324
Fax: 573 526 4494

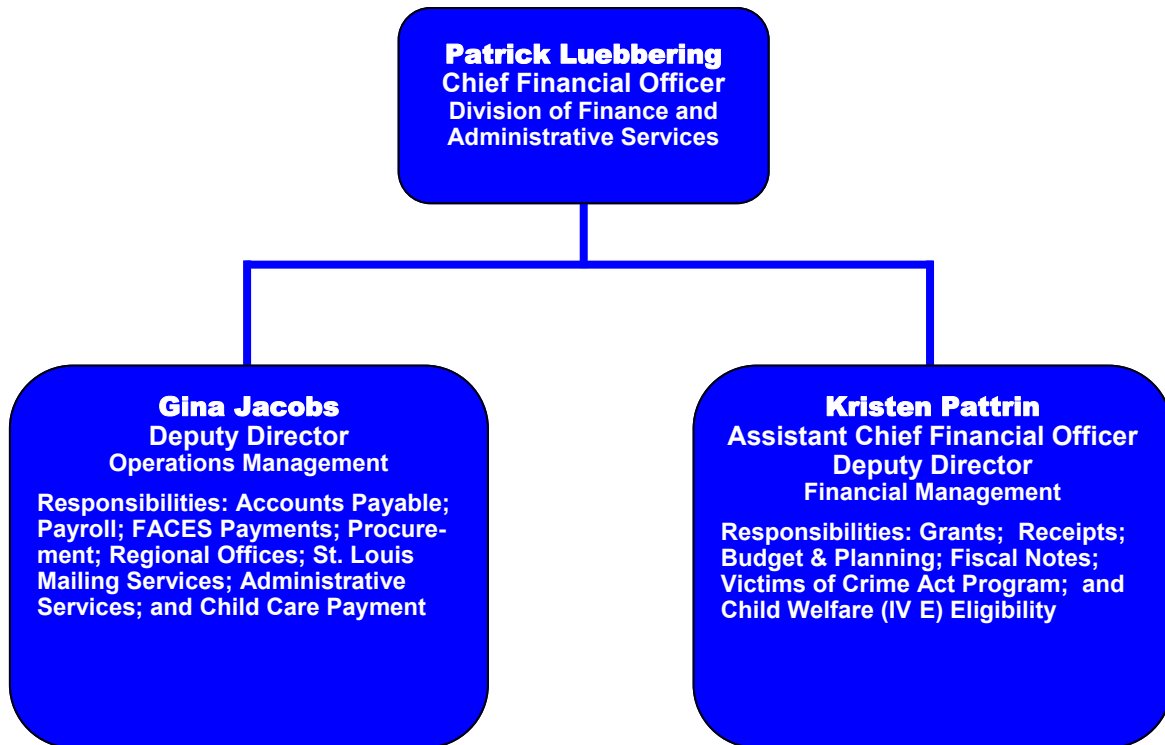


- The Division of Youth Services (DYS) is responsible for the direction and management of the state's juvenile justice programs.
- For a list of contacts in our local offices, please visit our web site, <http://www.dss.mo.gov/dys/ro.htm>.

Department of Social Services

Division of Finance and Administrative Services

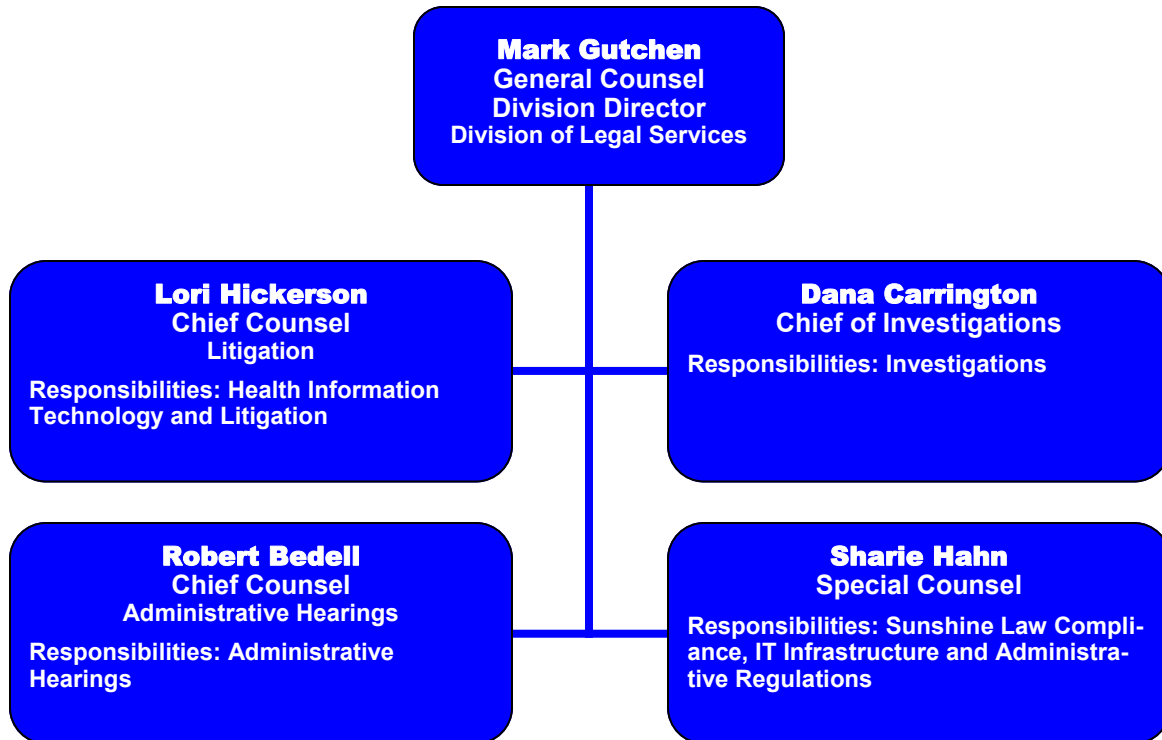
221 W. High Street
PO Box 1082
Jefferson City, MO 65102 1082
Phone: 573 751 7533
Fax: 573 751 7598



- The Division of Finance and Administrative Services provides budgeting, financial and support services to all agencies within the Department of Social Services. Offices are located in Jefferson City and various other locations around the state.

Department of Social Services
Division of Legal Services

221 W. High Street
PO Box 1527
Jefferson City, MO 65102 1527
Phone: 573 751 3229
Fax: 573 526 1484



- The Division of Legal Services provides comprehensive legal support to all program and support divisions in the Department of Social Services. The division represents the department, its divisions and the state.